

Thursday 14th June 2012 morning

Geography SDME preparation



Name:

Resource 1

TASK: Complete the missing words

Increasing longevity- People living _____ raises the average _____ of the population by increasing the numbers of _____ people.

Decreasing fertility- a _____ in fertility reduces the number of _____, and as the effect continues, the numbers of _____ people reduce.

Ageing population- a change in the _____ of a country's population towards _____ ages.

TASK: Take two colour pencils and shade over the following statements as either advantages/ disadvantages of an ageing population

Effects of an Ageing population
Spending on childcare and education decrease
Fewer people of working age
People may have to retire later
Older people have more time for their families
Fewer children mean that families will be better off
Increased spending on healthcare
Frailty and chronic disease may increase
Older people have more time to volunteer, which benefits the community

State one advantage of an ageing population: _____

Explain why it is an advantage _____

State one disadvantage of an ageing population: _____

Explain why it is a disadvantage _____

Resource 2

Task: Explain what a population pyramid is

Task: Complete the table below

	UK population 2000	UK Population 2050	Difference
Male 85+			
Female 85+			
Male 80-84			
Female 80-84			
Male 35-39			
Female 35-39			
Male 40-44			
Female 40-44			

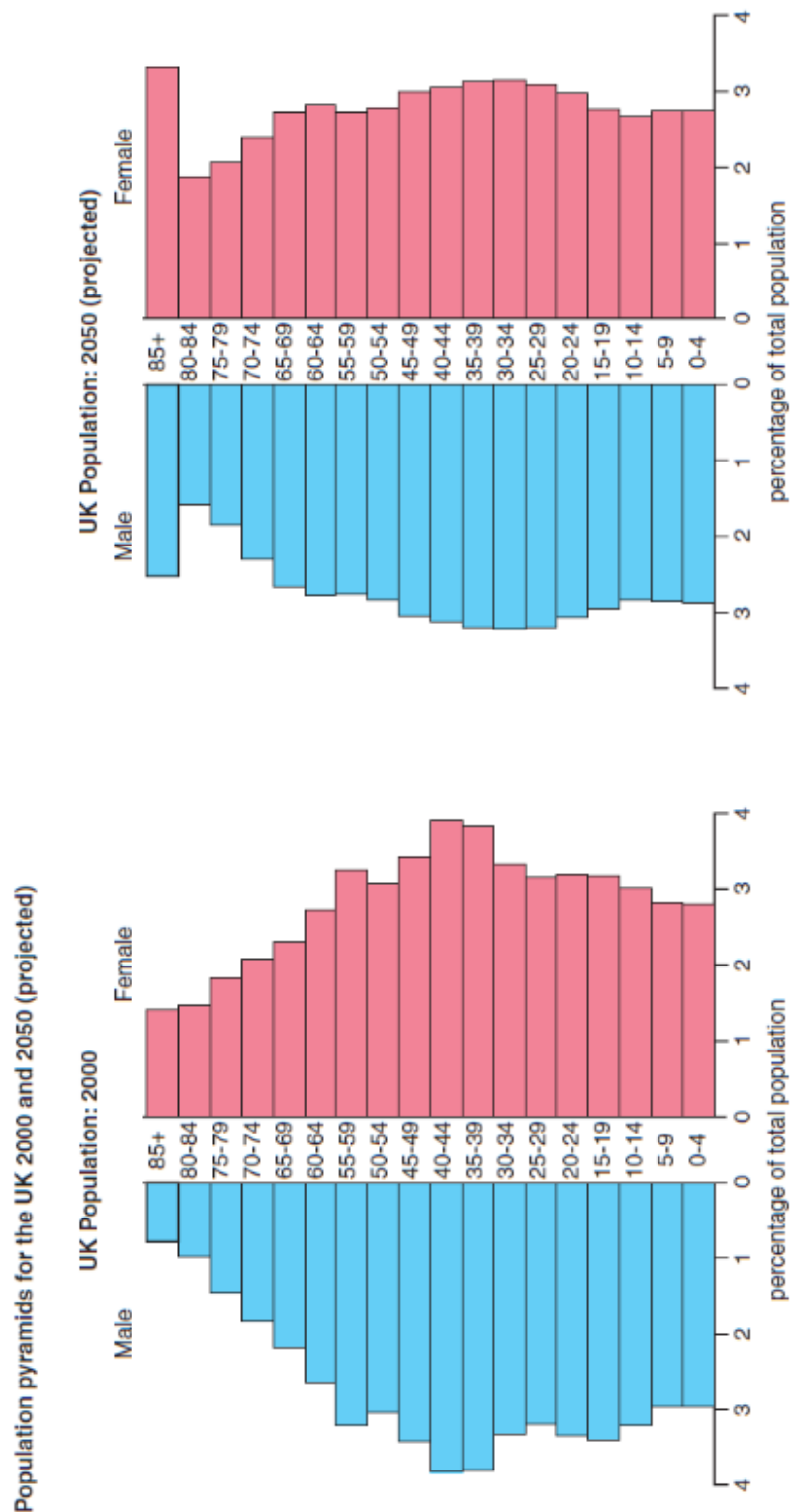
Task: Describe the differences you have identified in the table

Task: What percentage of the population are aged 65-85+ in:

2000 _____ 2050 _____

Task: Using **Resource 1** explain why the UK has an ageing population. Use evidence from **Resource 2** to support this. (you may need additional lined paper)

Task: Annotate the two population pyramids in your copy of **Resource 2** to describe the main features.



Task: What is the UK's dependency ratio (= number aged 0-15 + number aged 65 and over ÷ number aged 15-64 x 100) in 2000 and 2050?

2000: _____ 2050: _____

Task: What will the government have to do to plan for the projected population structure in 2050?

Task: Explain why the 2000 population structure was more sustainable than 2050's will be.

Resource 3

Task: Explain what is meant by the term disposable income

Task: Which age groups in **Resource 3a** have the highest and lowest disposable income?

Highest= _____

Lowest= _____

Task: Use **Resource 3b** to explain the reasons for the group with the lowest disposable income

Resource 4

Task: For each stakeholder in **Resource 4** explain their views of an ageing population.





Task: List other groups who would benefit from an ageing population and those who would not.

Benefit	Would not benefit

Resource 5

Task: read through "Retirement complexes in the UK" list the advantages and disadvantages of this type of development

Advantages	Disadvantages

Task: read through "Lothians to get Scotland's first 'retirement complex'" list the social, economic and environmental advantages and disadvantages

Social advantages	Economic advantages	Environmental advantages
Social disadvantages	Economic disadvantages	Environmental disadvantages

Resource 6

Task: use **resource 6** to answer these map skills questions

a) Describe the height of the land for area 1

b) How is the land currently used in area 2

c) In area 3, which of these would you not find: scree, buildings, leisure pool, national trail and a golf course

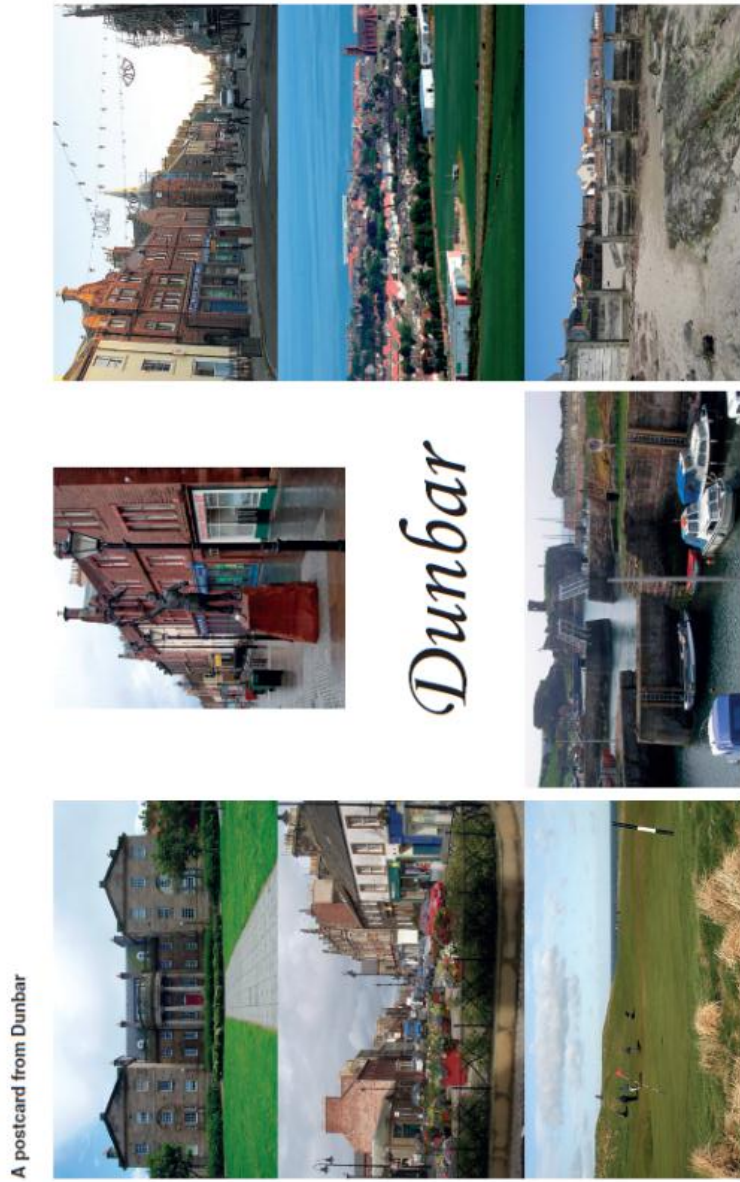
d) What is the 4 figure grid reference for Dunbar railway station

Task: Describe the location, the current landuse and the surrounding features of each area:

Area	Location:	Current landuse:	Surrounding features:
1			
2			
3			

Resource 7

Task: Annotate the copy of resource 7 with reasons why Dunbar has been chosen as the location of Scotland's first retirement complex



Resource 8

Task: Describe the location of Dunbar using the maps in **resource 8**

Task: Spot the mistakes!! Read through the copied factfile below. There are **6** mistakes. Can you spot them and correct them?

Dunbar Fact File

Due to its geographical location, Dunbar receives less hurricanes and more hours of sunshine per year than anywhere else in Scotland. Locals call the town 'Sunny Dunny'! Dunbar is a dungeon town popular with workers in nearby Edinburgh (44 km away). Dunbar's population was 6354 according to the 2001 census, but its population is growing (estimated at 7100 for 2012).

Pottery is still important to the local economy, but fishing has declined. There is a large cement factory, a bakery and nearby there is a nuclear power plant, all of which provide jobs for the local population.

However, most people commute to London to work.

Dunbar has the first giant supermarket in East Lothian.

Task: Explain in your own words one advantage of large American-style retirement complexes. (practice using connectives- extend your answer)

Use **resource 6 and 8** to help you

Task: Complete a table of advantages and disadvantages of each site. Think about stakeholders' opinions of each site too.

Site	Advantages	Disadvantages	Stakeholder views?
1			
2			
3			