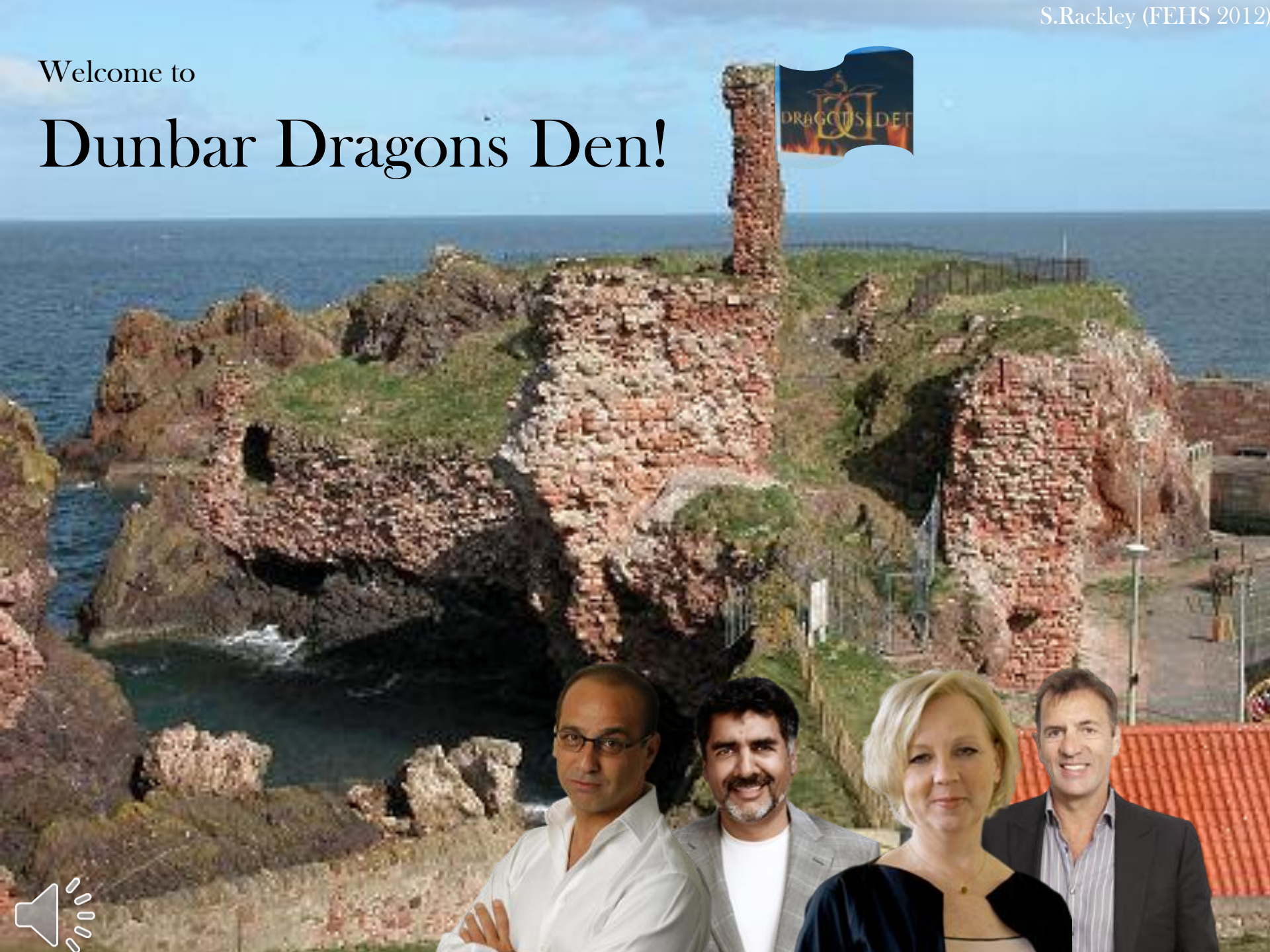


Welcome to

Dunbar Dragons Den!



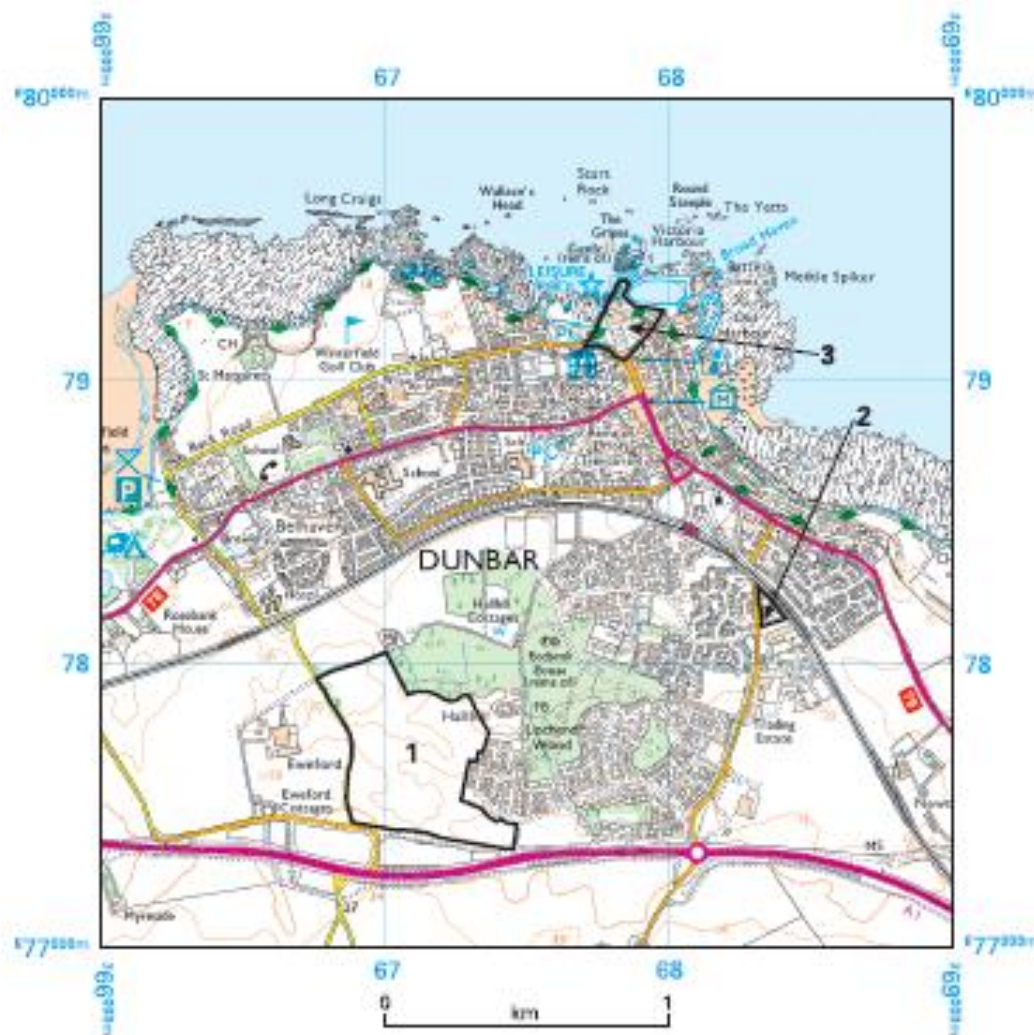
The Student **Dragons**!

You are in teams.

You will choose which site, 1, 2 or 3 will be best for a new retirement complex.

You will give strong arguments for – stating how sustainable your choice is, and who the winners will be.

You will argue against the other sites, stating how unsustainable they are and who the losers will be.



The Dragons will be looking for **EVIDENCE!**

To prepare:
Annotate your
copy of Resource
6 (the map) with
information
about the each
site and it's
situation (5
minutes).



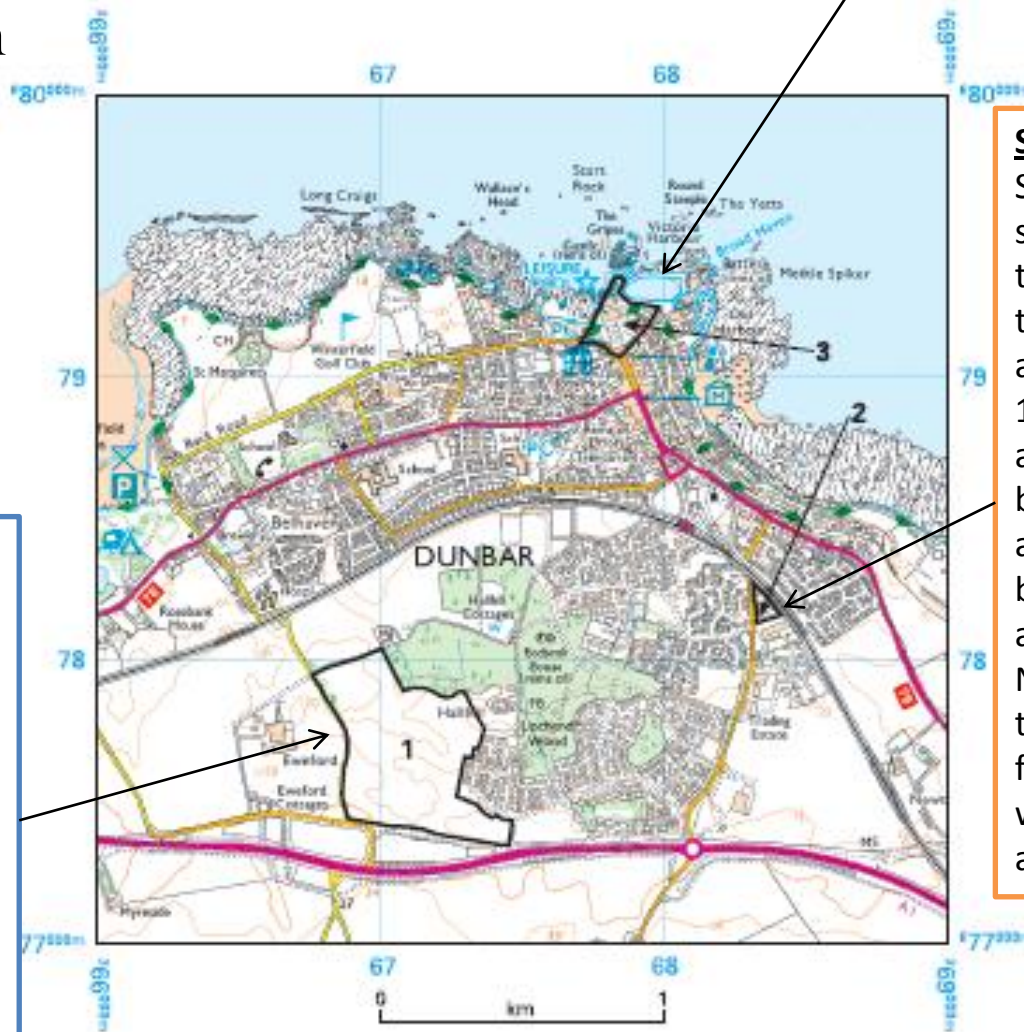
To prepare:
Annotate your copy of Resource 6 (the map) with information about the each site and it's situation (5 minutes).

Site 1

Largest area- approx 0.25 km². Greenfield site on a slight easterly facing slope, between 10-20m high. Close to A1 - the busy main road between the north of England and Scotland. Views over mixed woodland and close to the remains of the historical site of the remains of Old Lochend House.

Site 3

Brownfield site with a large building (Lauderdale House) fronted by parkland. Overlooking the beach, leisure pool and harbour. Views out to sea. Close to the town centre and its amenities, yet in a quiet location on a side road. Golf course 1km away and coastal footpath runs past.



Site 2

Smallest of the three sites. Brownfield site as there is a building already there. Close to the sea and station but about 1km from the town centre amenities. Wedged between the main railway and the access road between the town centre and junction for the A1. Next to the town's main trading estate (small factories and warehouses) which will generate noise and traffic.

The Student Dragons!

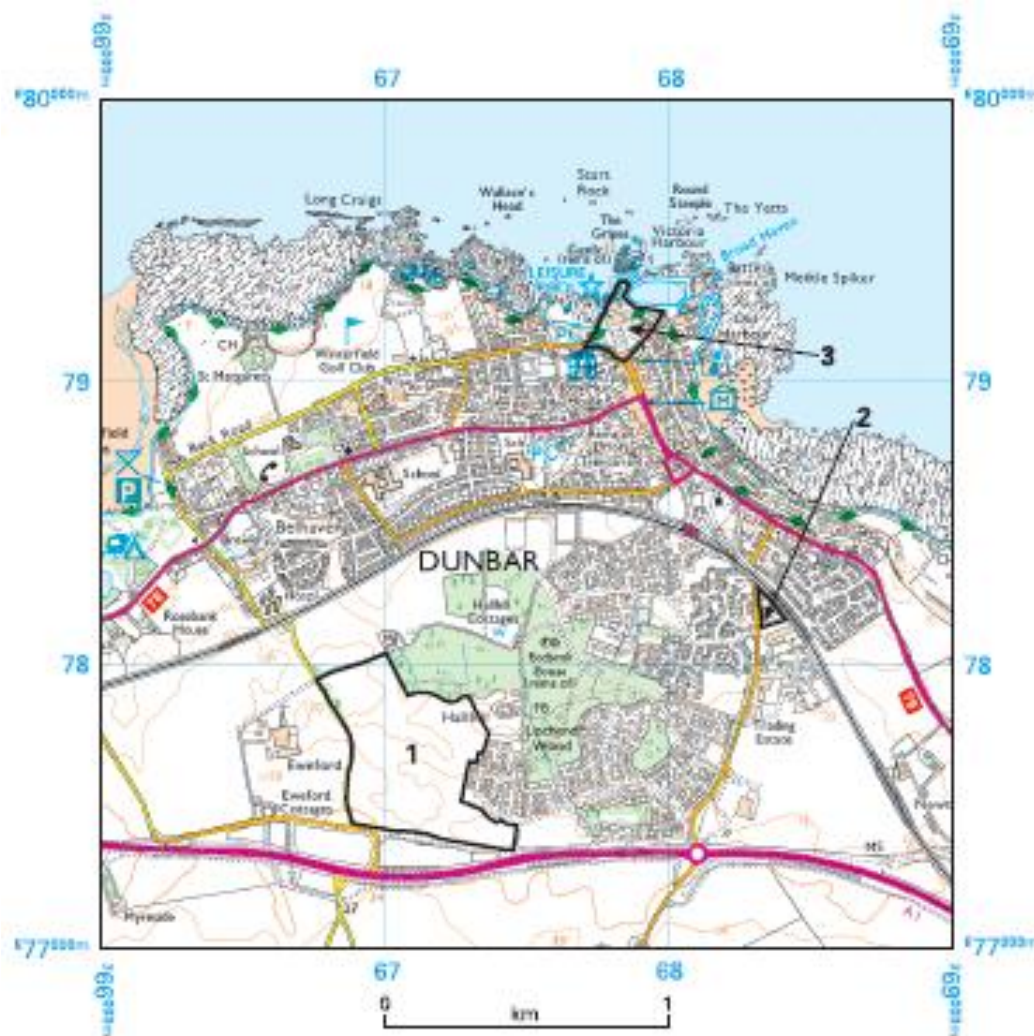
USE YOUR GUIDE SHEET!

You have 30 minutes to prepare your arguments and a maximum of 2 minutes to present to the Dragons.

The Dragons will then ask you questions which you must answer wisely!

You may have something visual to present.

GOOD LUCK!



A dimly lit room with three large arched windows, leather chairs, and small tables. The room has a rustic, industrial feel with brick walls and a wooden floor. The lighting is warm and focused on the seating area.

DRAGONS' DEN



Making decisions: the dos and don'ts!

Do use those magic words:
“SUSTAINABLE”,
“SOCIAL”,
“ECONOMIC” and
“ENVIRONMENTAL”
if you can. Otherwise
I'm OUT!



Making decisions: the dos and don'ts!

Do use those magic words:
“SUSTAINABLE”,
“SOCIAL”,
“ECONOMIC” and
“ENVIRONMENTAL”
if you can. Otherwise
I'm OUT!

*Don't just write
a practised or
mock answer!
READ and
ANSWER the
question! Or
I'M OUT!*



Making decisions: the dos and don'ts!

Don't, and I mean **DON'T** ignore the information throughout the booklet. That's all the way from **Resource 1 to 8**, got it?! If you do, **I'm OUT!**

Do use those magic words:
"SUSTAINABLE",
"SOCIAL",
"ECONOMIC" and
"ENVIRONMENTAL"
if you can. Otherwise
I'm OUT!

*Don't just write a practised or mock answer! **READ** and **ANSWER** the question! Or **I'M OUT!***



Making decisions: the dos and don'ts!

ALWAYS DO consider the stakeholders... Winners AND losers, especially those in Resource 4. It's good business sense... Or I'm OUT!

Don't, and I mean DON'T ignore the information throughout the booklet. That's all the way from Resource 1 to 8, got it?! If you do, I'm OUT!

Do use those magic words:
"SUSTAINABLE",
"SOCIAL",
"ECONOMIC" and
"ENVIRONMENTAL"
if you can. Otherwise
I'm OUT!

Don't just write a practised or mock answer! READ and ANSWER the question! Or I'M OUT!



Making decisions: the dos and don'ts!

ALWAYS DO consider the stakeholders... Winners AND losers, especially those in Resource 4. It's good business sense... Or I'm OUT!

Don't, and I mean DON'T ignore the information throughout the booklet. That's all the way from Resource 1 to 8, got it?! If you do, I'm OUT!

Do use those magic words:
"SUSTAINABLE",
"SOCIAL",
"ECONOMIC" and
"ENVIRONMENTAL"
if you can. Otherwise
I'm OUT!

Don't just write a practised or mock answer! READ and ANSWER the question! Or I'M OUT!

*Phwoarh!
Deborah is fit!*



...And show
Peter that you
can P.E.E! It
better be
good P.E.E., or
he's

OUT!

