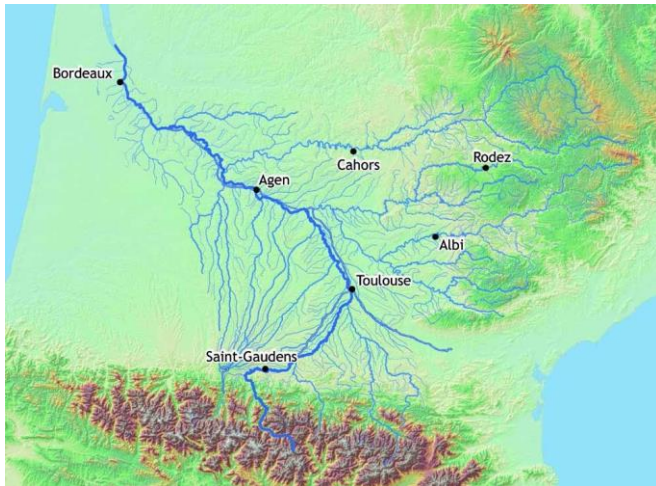
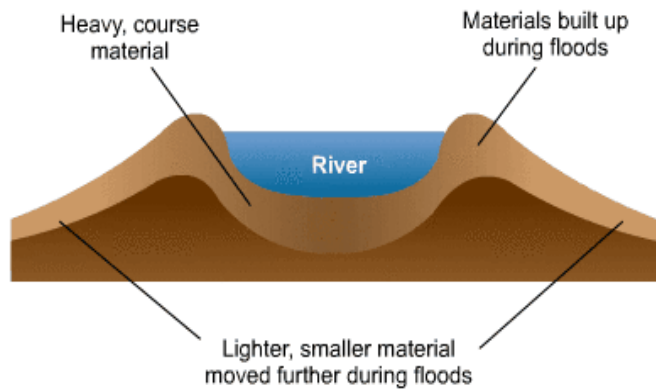


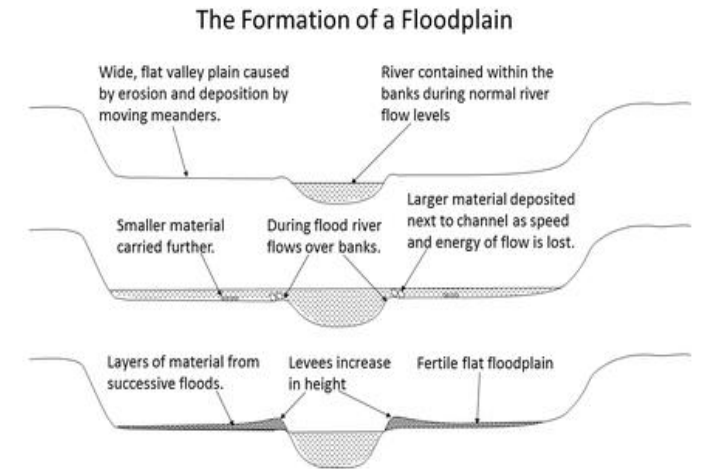
# IGCSE Geography – Lower Course of the River Garonne – Student Case Study Sheet



**Task 1** – Describe how a natural levee is formed



**Task 2** - With the aid of the diagram to the right, explain how a floodplain forms? Does its formation rely on erosion or deposition?



**Task 3** – Describe the characteristics of the Garonne estuary on the Google Map to left. Use an interactive Google map & street view to get a little more detail.

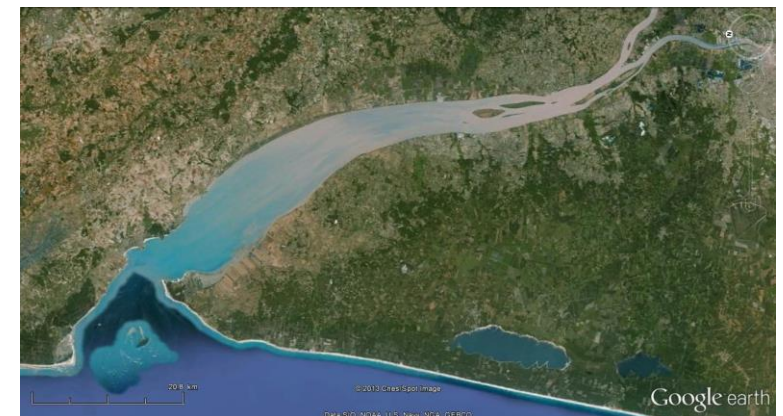
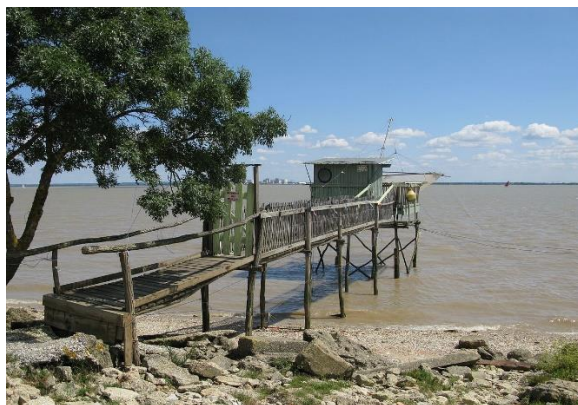
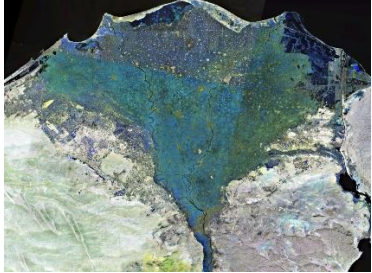



Figure 1 Courtesy of s-cool

## IGCSE Geography – Deltas (Note that the Garonne does not have a delta!)

Task 4 – Where are deltas found and are they a depositional or erosional feature

Task 5 – What does flocculation mean and how does it cause increased sediment deposition as the freshwater meets the salt water?

Delta Type	Formation	Photo	Case Study Example
<b>Arcuate Delta</b>			
<b>Birds Foot Delta</b>			

Task 6 - How are deltas impacted by climate change? Click here <https://www.npr.org/sections/parallels/2017/08/13/542645647/in-egypt-a-rising-sea-and-growing-worries-about-climate-changes-effects> to find out more. Make some notes on the issues on the Nile Delta.